

Building Maintenance Units Suspended Scaffolding



www.ademsan.com


Ademsan
Machinery

SKYLAND, Istanbul - TURKEY





Light
Construction
Machinery

Building
Maintenance
Units

table of Content

About Us	02
AST-05 Series On Person Working Platform	04
AST-10 Series Two Person Hoisted Working Platform	06
AST-10-01 Series Two Person Hoisted Working Platform	08
AST-12 Series Two Person Working Platform	10
AST-12-01 Series Openable Scissored (Pantograph) Type Double Person Working Platform	12
AST-15-01 Series Counterweight Suspension System	14
AST-15-02 Series Counterweight Suspension System	16
AST-20 Series Anchorage (Low Ride Davit) Arm Suspension System	18
AST-25 Series Davit Arm Suspension System	20
AST-30 Series Monorail Façade Cleaning System	22
AST-35 Series Climbing Monorail Façade Cleaning System	28
Monorail Sections Systems	31
AST-40 Series Monorail Façade Cleaning System	32
AST-45 Series Monorail Façade Cleaning System	36
AST-50 Series Monorail Façade Cleaning System	40
AST-60 Series Monorail Façade Cleaning System	42
AST-70 Series monorail Façade Cleaning System	48
Skylight Series Façade Cleaning System	50
Electrical Suspended Scaffolding System	56
Special Design Suspended Scaffold	58
Restraint Sockets Systems	59



About Us

Production Areas

- ▶ Building Maintenance Units
- ▶ Facade Cleaning Machines
- ▶ Electrical Suspended Scaffolding
- ▶ Special Design/ Custom Made
- ▶ Rebar Cutting Machines
- ▶ Rebar Bending Machines
- ▶ Resistance Bending Machine



Our company, one of the leading companies of Building Maintenance Units (BMU, Light construction machinery and equipments is continuing its activities in its Ankara factory located in the area of Ostim Organizational Industrial Zone Istanbul, sales and service departments continues its activities at Istanbul Iktelli Organizational Industrial zone.

Together with 20 dealers in Turkey and overseas 15 distributors, manufactures products oriented to construction sector.

With its experienced and extended staff; provides project design, manufacturing, assembly and maintenance services.

Cooperation with Hacettepe University for the development and analysis of the products is active.

Ademsan Machinery provides sales, installation and technical support services for Building Maintenance Units, Special Design Platforms and Rebar Cutting & Rebar Bending Machines.

Machine designs belongs to itself, during the years of 2013 and 2014 has successfully completed the research and development program of developing façade cleaning systems /building maintenance units together with TUBITAK.

Ademsan Machinery offers products to customers use that undergo rigorous testing and multidisciplinary quality control from the start of raw material to end.

Along with standard machines, in accordance with customer requests different assortments and custom made platforms are manufactured.

Ademsan Machinery provides and serves its customers with its; project department of engineers, professional technical staff, continuous development and with wide range of machinery.

With its quality focused operation has signed to major project in Turkey and overseas.

AST-5

SERIES ONE PERSON WORKING PLATFORM

- One person platform used in small and narrow areas.
- Used together with counterweigh, davit arm, monorails and other systems.
- One engined /hoisted and wire rope reared system platform.
- Preferred at 100 x 80 Cm narrow façades.
- One piece of safety wire rope is upon.
- 120 Kg load capacity.
- Security wire rope and safety lock (security lock) allows safe working environment.
- Lower limit and upper limit switch systems prevents operator errors.
- Manufacturing and assembly is in accordance within EN 1808 standards and norms.





Polat Hotel, Erzurum - Turkey



KN Mühendislik, Istanbul - Turkey



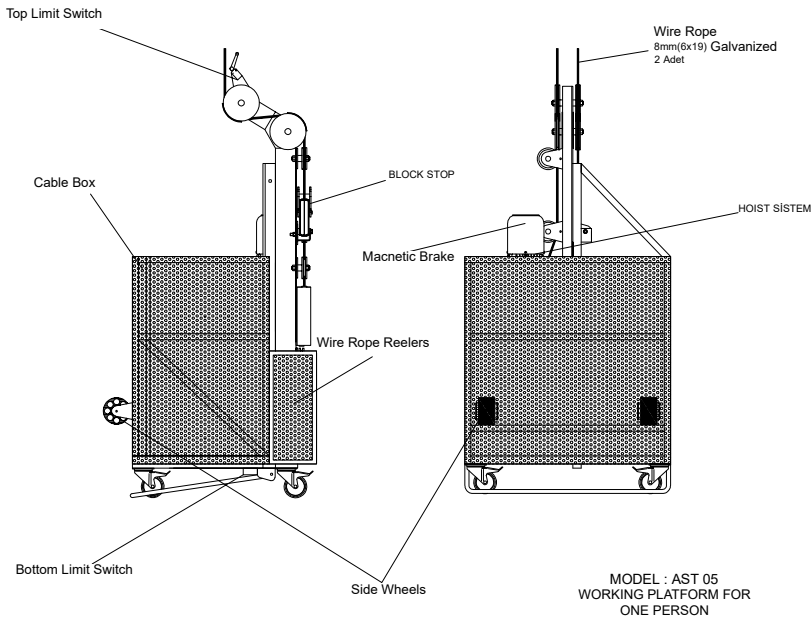
Dalan Chemistry, Istanbul - Turkey



Social Security Institution, Istanbul - Turkey



Odak Construction, Istanbul - Turkey



FEATURES	
Used with	AST 15, AST 20, AST 25, AST 30, AST 35 Systems
Power	1,5 kW
Wire rope	2 Pieces 8 Mm Wire Rope
Voltage	380 V
Control	Cable
Lifting	7 M /Min 1 Unit 1,1 kW
Shifting	Manually & Motorized
Platform Weight	200 kg (Differs in accordance with building height).
Working Capacity	120 Kg

AST-10

SERIES TWO PERSON HOISTED WORKING PLATFORM



- Two Person double hoisted platform.
- Used together with counterweigh, davit arm, monorails and other terrace systems.
- Double hoisted and double wire rope reeled platform.
- With 200 x 60 x 100 cm dimensions used within all general purpose works.
- 2 Pieces of carrying wire ropes and 2 units of security wire ropes are available.
- 250 kg load capacity (Custom made and upon request load capacity can vary).
- Security wire ropes and safety locks allows safe working environment.
- Over load sensor, Lower collision bar, Upper and Lower limit switches prevents operator errors.
- Manufacturing and assembly is in accordance within EN 1808 standards and norms



Turkcell Kartal Plaza, Istanbul - Turkey



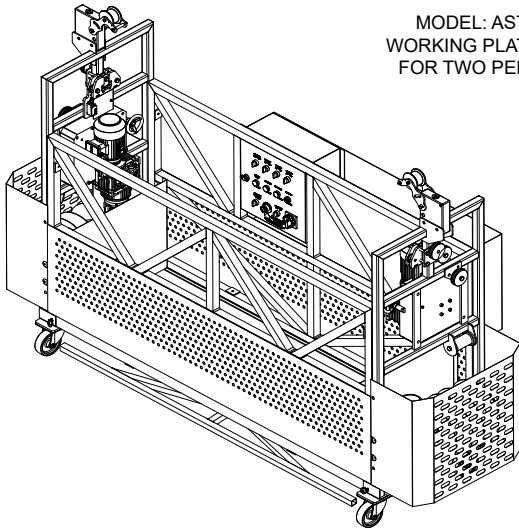
Esenler Hospital, Istanbul - Turkey



Tüze Tower, Bursa - Turkey



Black Sea Trade Center, Batum



MODEL: AST 10
WORKING PLATFORM
FOR TWO PERSON

FEATURES

Used with	AST 15, AST 20, AST 25, AST 30, AST 35 Systems
Power	3 kW
Wire rope	4 Pieces 8 Mm Wire Rope
Voltage	380 V
Control	Cable
Lifting	7 M /Min 2 Units 2,2 kW
Shifting	Manually & Motorized
Platform Weight	300 kg ... (Differs in accordance with building height)
Working Capacity	250 Kg

AST-10-01

SERIES TWO PERSON HOISTED WORKING PLATFORM



- Constructed upon AST 10 Two Person Cardle.
- Used when in reach for the verges / canopy indents.
- Used with Counterweight. Davit Arm, Monorail and terrace units.
- Platform with double hoist and wire rope reeler.
- With 200 x 60 x 100 Cm dimensions used within all general purpose works.
- 2 Pieces of carrying wire ropes and 2 units of security wire ropes are available.
- Engine system 1m outward openable / 1 m inclines
- 250 kg load capacity (Custom made and upon request load capacity can vary).
- Security wire ropes and safety locks allows safe working environment.
- Over load sensor, Lower collision bar, Upper and Lower limit switches prevents operator errors.
- Manufacturing and assembly is in accordance within EN 1808 standards and norms



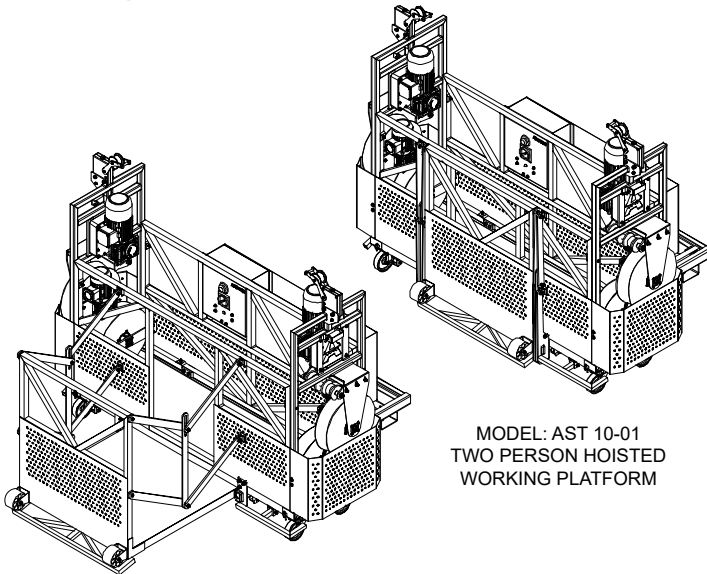
Sea Tower, Batum



Askabat AVM, Turkmenistan



Acibadem University Hospital, Istanbul - Turkey



MODEL: AST 10-01
TWO PERSON HOISTED
WORKING PLATFORM

FEATURES

Used with	AST 15, AST 20, AST 25, AST 30, AST 35 systems
Power	3 kW
Wire rope	4 Pieces 8 Cm Wire Rope
Voltage	380 V
Control	Cable
Lifting	7 M /Min 2 Units 2,2 kW
Shifting	Manually & Motorized
Outward Opening Distance	1 M Outward /Forward Openable.
Platform Weight	350 Kg ... (Differs in accordance with building height)
Working Capacity	250 Kg

AST-12

SERIES TWO PERSON WORKING PLATFORM



- Two person working platform, no lift system upon it.
- Used only with terrace units.
- With 200 x 60 x 100 cm dimensions used within all general purpose works.
- System is made up of aluminum material.
- 2 Pieces of carrying wire ropes and 2 units of security wire ropes are available.

- 250 kg load capacity (Custom made and upon request load capacity can vary).
- Security wire ropes and safety locks allows safe working environment.
- Over load sensor, Lower collision bar, Upper and Lower limit switches prevents operator errors.
- Manufacturing and assembly is in accordance within EN 1808 standards and norms



Al Siniyar Tower, Qatar



Fakhro Tower, Bahrein



Kanoo Tower, Bahrein



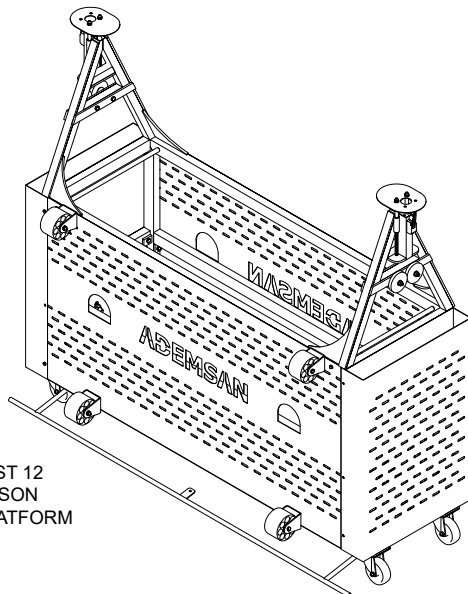
Mid Cotracting, Qatar



What Mall Khartum, Sudan



Yolbulan Metal Ataşehir, Istanbul - Turkey



MODEL: AST 12
TWO PERSON
WORKING PLATFORM

FEATURES

Used with	AST 40, AST 45, AST 50, AST 60, AST 70 Systems.
Wire rope	4 Pieces 8 mm Wire Rope
Voltage	24 V
Control	E-Cable / Cable
Lifting	8 M /Min With BMU
Moving	4 M /Min With BMU
Platform Weight	150 kg ... (Differs in accordance with building height)
Working Capacity	250 Kg

AST-12-01

SERIES OPENABLE SCISSORED (PANTOGRAPH) TYPE, DOUBLE PERSON WORKING PLATFORM

- Platform used when necessary to reach under the indents / under eaves.
- Optionally scissors type forward openable 1, 2, 3 m platform.
- Movement of opening is performed within the platform via manual hydraulic piston.
- Two person working platform, no lift system upon it.
- Used only with terrace units.
- With 200x60x100 cm dimensions used within all general purpose works.
- Main grider/body system is made up of steel, platform up from aluminium material.
- 2 Pieces of carrying wire ropes and 2 units of security wire ropes are available.
- 250 kg load capacity (custom made and upon request load capacity can vary).
- Security wire ropes and safety locks allows safe working environment.
- Over load sensor, Lower collision bar, Upper and Lower limit switches prevents operator errors.
- Manufacturing and assembly is in accordance within EN 1808 standards and norms





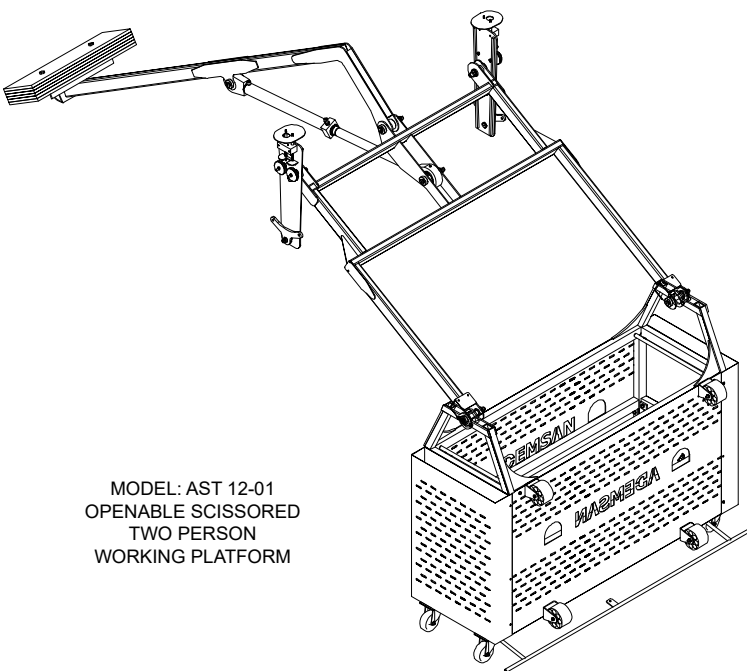
Ist Marina Istanbul, Turkey



Rotana Hotel Istanbul, Turkey



Rotana Hotel Istanbul, Turkey



MODEL: AST 12-01
OPENABLE SCISSORED
TWO PERSON
WORKING PLATFORM

FEATURES

Used with	AST 40, AST 45, AST 50, AST 60, AST 70 Systems
Wire Rope	4 Pieces 8 Mm Wire Rope
Voltage	24 V
Control	E-Cable / Cable
Lifting	8 M /Min With BMU
Moving	4 M /Min With BMU
Outward Opening Distance	1,2,3 M Outward /Forward Openable (Optional...as per request)
Open Movement	Manual Powered Hydraulic Piston
Platform Weight	150 kg (Differs in accordance with building height)
Working Capacity	250 Kg

AST-15-01

SERIES COUNTERWEIGHT SUSPENSION SYSTEM



- Wheeled suspension system composed of one suspension arm, which passes over the parapet to the façade, and a counterweight arm where weights are placed on the terrace floor of the building.
- Counterweight suspension system is moved manually by hand on the terrace level / floor.
- 4 wheels founded underneath the system can be locked upon the desired point.
- For this system to work effectively; floor surface should be flat and have the standard and quality to bear the

systems' weight.

- Upon request the system is manufactured to have either a one person working platform or two person.
- Counterweights vary according to suspension arms and counterweight arms' dimensions
- Suspension arm types vary according to height and dimension of the buildings terrace dimensions and parapet height.
- Manufacturing and assembly is in accordance within EN 1808 standards and norms.

FEATURES	
Platform	One Person and Two Person Cradle AST 05-AST 10
Suspension Arm Dimension	1,2 M Towards The Façade, 1.20 M Height
Counterweight	400 Kg (Differs to project)
Shifting	Manually
Wheel	4 Units Cache Type
Final Coating	Hot Dip Galvanized (Painted according to request)



Sisli Council, Istanbul - Turkey



Police Station Ankara - Turkey



Acibadem, Istanbul - Turkey



Eren Energy, Zonguldak - Turkey



Ucgen Plaza, Istanbul - Turkey





AST-15-02

SERIES COUNTERWEIGHT SUSPENSION SYSTEM

- Wheeled suspension system composed of one suspension arm, which passes over the parapet to the façade, and a counterweight arm where weights are placed on the terrace floor of the building.
- Counterweight suspension system is moved manually by hand on the terrace level / floor.
- 4 wheels founded underneath the system can be locked upon the desired point.
- For this system to work effectively; floor surface should be flat and have the standard and quality to bear the systems weight.
- Upon request the system is manufactured to have either a one person working platform or two person
- Counterweights vary according to suspension arms and counterweight arms dimensions
- Suspension arm types vary according to height and dimension of the buildings terrace dimensions and parapet height.
- Manufacturing and assembly is in accordance within EN 1808 standards and norms

FEATURES	
Platform	One Person and Two Person Cradle AST 05-AST 10
Suspension Arm Dimension	1,2 M Towards The Façade, 1,20 M Height
Counterweight	400kg (Differs To Project)
Shifting	Manually
Wheel	4 Units Cache Type
Final Coating	Hot Dip Galvanized (Painted according to request)



Armada, Ankara - Turkey



Kent Plaza, Konya - Turkey



Takasbank, Istanbul - Turkey



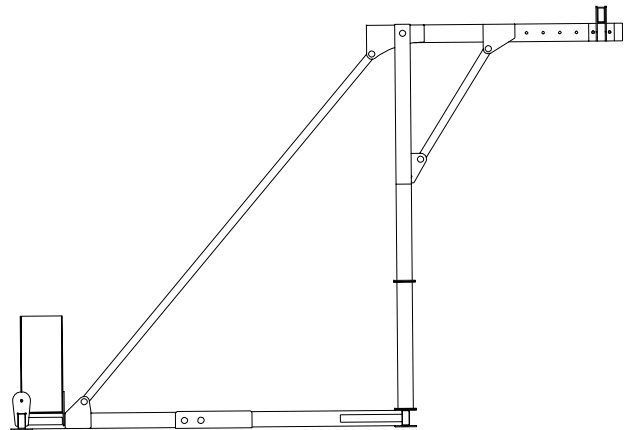
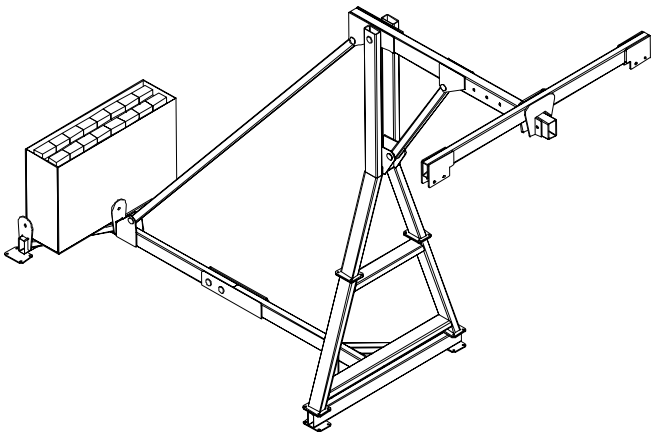
Turkcell Cinnah Plaza, Istanbul - Turkey



Icdas - Turkey



Afsin Elbistan - Turkey





- It is a suspension arms' system where arm bases are anchored on the terrace floor or on the inner parapet.
- Steel pedestals (brackets) with appropriate intervals ,according to the project, are anchored on the terrace floor or on the parapet.
- L type Suspension Arms are used.
- Suspenson arms' are fixed with pims to the steel pedestals (brackets).
- Suspension arms are dismantelled and mantelled manually by hand and moved.
- The points where the pedestals are anchored should be at the standart and quality to carry the weight of the system.
- According to request the system is manufactured to mantle single person or double person cradle / platform.
- Height of the suspension arms' and dimensions are manufactured in different types in accordance with the parapet height and the buildings terrace dimensions.
- Manufacturing and assembly is in accordance within EN 1808 standards and norms.



Dedeman, Antalya - Turkey



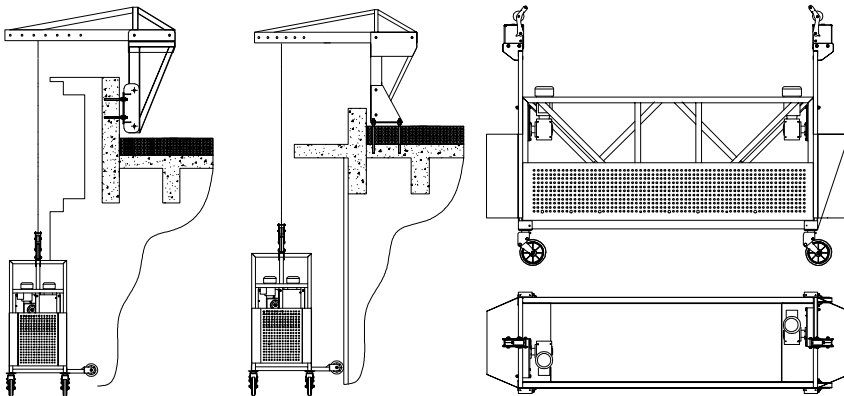
Pelican Hill Residence, Istanbul - Turkey



Imtas, Kayseri - Turkey



Cardak Hotel, Askabat



FEATURES

Platforms	One Person or Two Person Hoisted Platform AST 05-AST 10
Suspension Arm	L Type
Suspension Arm Dimension	Standard 1 M To The Façade, 1,20 M Height
Shifting	Manually
Anchorage Bolts	4 Pieces M 20
Final Coating	Hot Dip Galvanised (Painted according to request).



AST-25

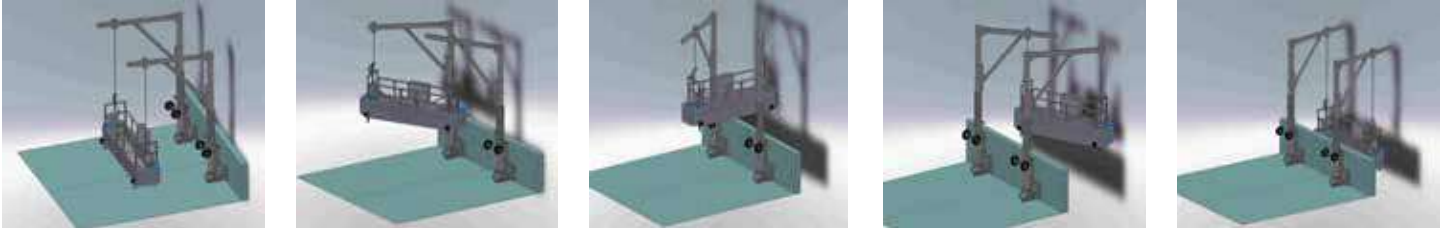
SERIES DAVIT ARM SUSPENSION SYSTEM

- Is a system with special high mast attached to suspension arms pedestals which are either anchored on the building terrace or on the inner parapet
- System is preferred, when necessary, for the working platform to park on the terrace floor / level.
- By means of two davit suspension arms, parapet or other overcoming obstacles are cleared and the platform parked upon the terrace level / floor.
- Steel pedestals (brackets), are anchored according to project and to the platform dimensions, either on to the parapet or on the concrete
- L type Davit Arms are used.
- Davit Arms are fastened / fixed upon the pedestals (brackets) by the means of pins.
- Davit Arm is manually moved from the pedestals by the means of plug and wear.
- Anchored points of the steel pedestals, should bear the quality and the standards of the systems' weight
- Upon request the system is manufactured to have either a one person working platform or two person.
- Suspension arm height and dimensions differ in types in accordance with the parapet height and the buildings' terrace dimensions.
- Manufacturing and assembly is in accordance within EN 1808 standards and norms.

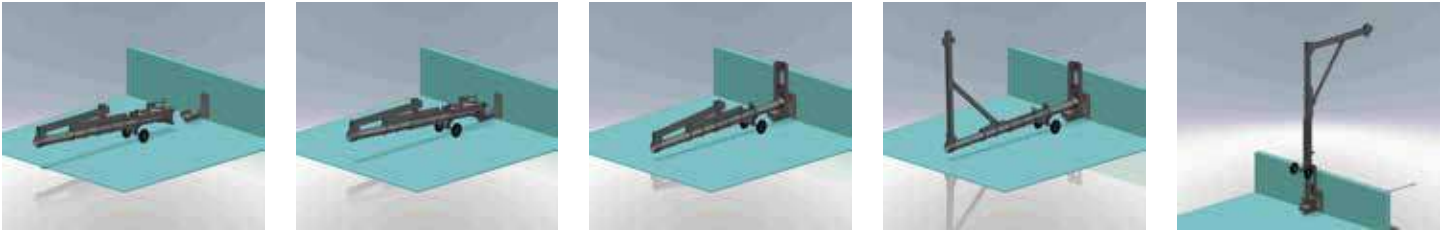
FEATURES

Platform	One Person and Two Person Hoisted Platform AST 05 - AST 10
Davit Arm Type	Long L Type (customized dimensions)
Davit Arm Dimensions	Standard 1,5 M Towards the Façade and 2,5 Height.
Slewing	Manually
Shifting	Manually
Installation	Manually
Anchorage Bolt /Pim	4 Units M 20
Final Coating	Hot Dip Galvanized (Painted according to request)

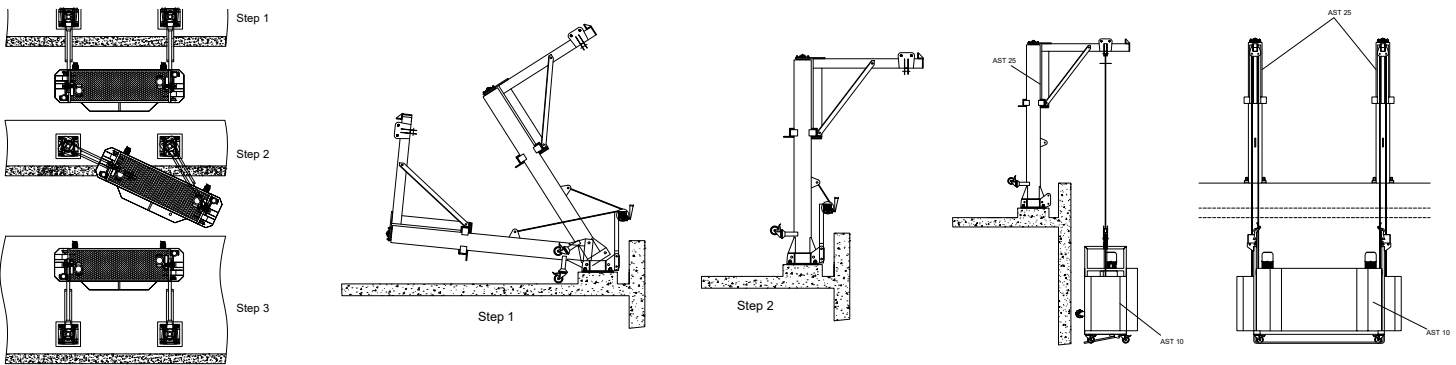
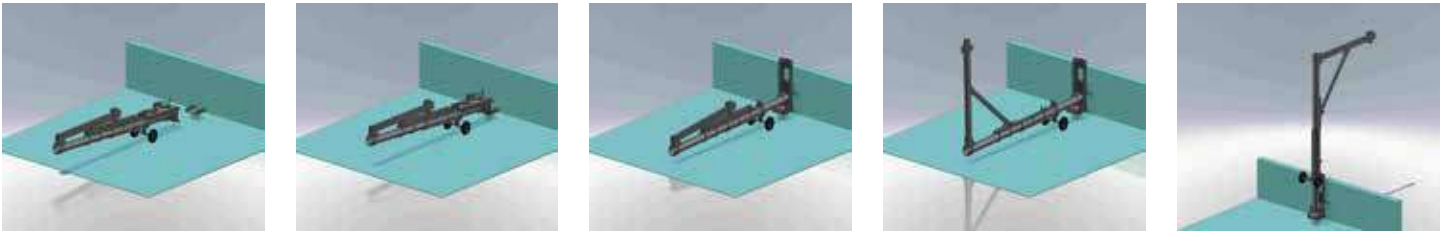
DAVİT ARM SUSPENSION SYSTEM



DAVİT ARM SUSPENSION SYSTEM MOUNTED TO THE PARAPET



DAVİT ARM SUSPENSION SYSTEM MOUNTED TO THE FLOOR





AST-30

SERIES MONORAIL FAÇADE CLEANING SYSTEM



- It is a façade cleaning system moving horizontally and vertically over aluminum rail (mono rail) connected with the special brackets to the façade.
- As per request and in accordance with the building either one person platform or double/ two person platform is used.
- Platform movement can be achieved either by means of manual or automatic special made movement hoists.
- Aluminium monorail is manufactured and mounted in accordance with the buildings' façade shape and height.
- Monorail carrying arms (brackets) can be mounted on the façades front side ,on the parapet , inner side of the parapet ,away from the parapet on the concrete floor or under the eaves.
- Rails can be painted either with natural aluminium colour or upon request.
- All movements can be controlled via the control panel inside the working platform.
- Vertical movement is performed via the climbing hoists' mechanism located on the working platform.
- Damage on the facade glass is prevented via the means of 2 polyurethane wheels / bumpers founded on the platforms' front side.
- Double security wire ropes ,safety lock system and wire rope tension like safety and security measures provide safe working environment.
- Over load sensor,Lower collision bar,Upper and Lower limit switches prevents operator errors.
- Manufacturing and assembly is in accordance within EN 1808 standards and norms.



Iktisat Bank, Cyprus



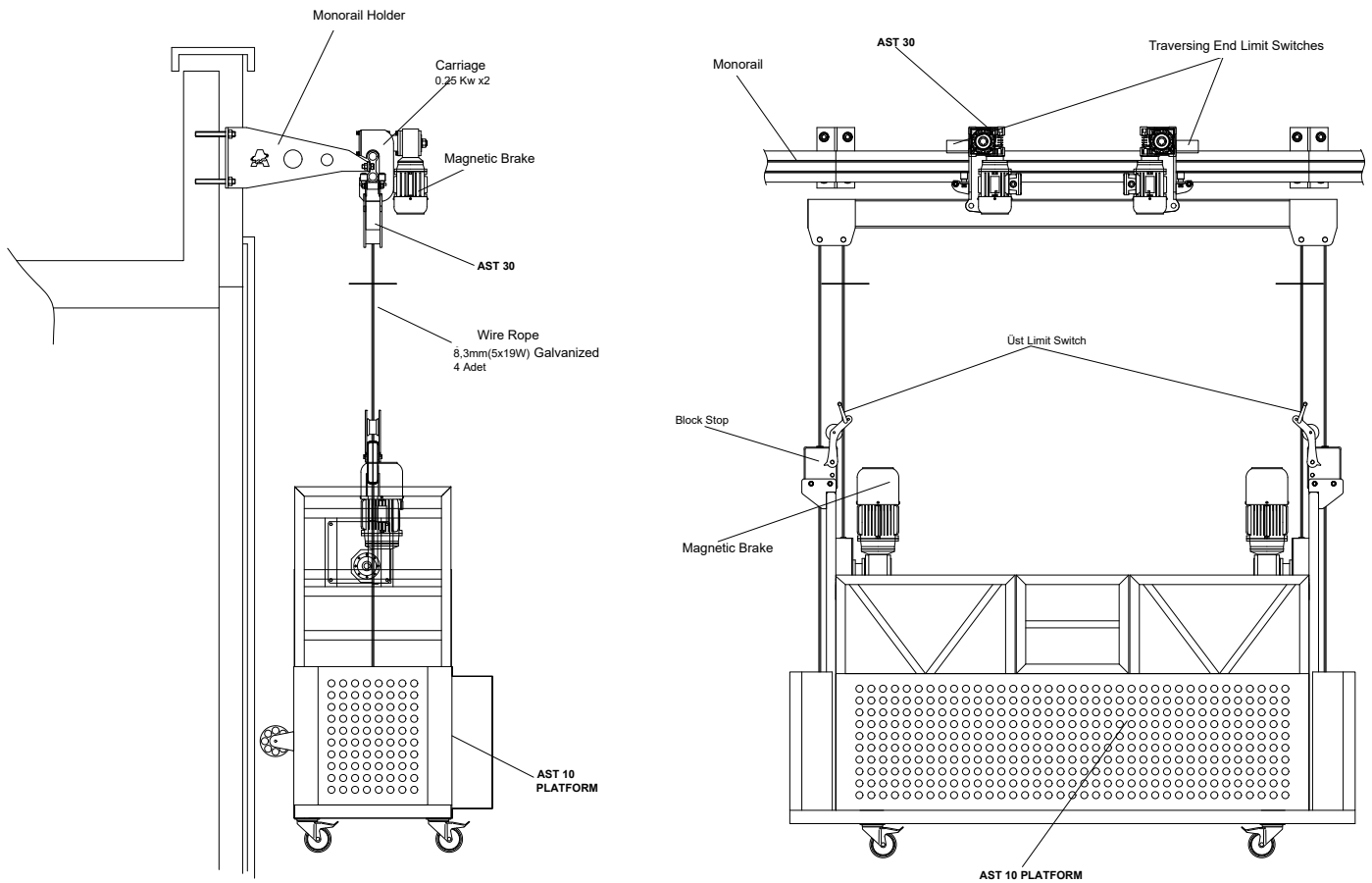
Holiday Inn, Ankara - Turkey



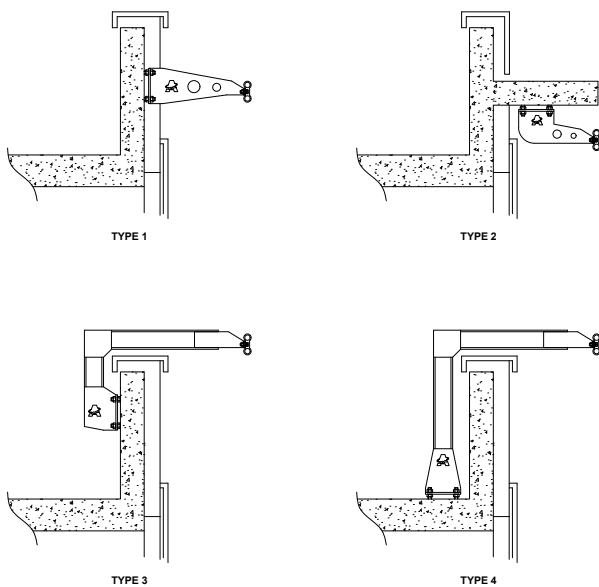
Istanbul Tower, Istanbul - Turkey



Eskisehir Tax Office, Eskisehir - Turkey



MONORAIL SYSTEM / AST30



MONORAIL BRACKET TYPE

FEATURES	
Platforms	One or Two Person Hoisted Platforms AST05 - AST 10
Rail	Aluminium 6000 Series
Rail Coating	Natural / As Per the Request (Optional)
Bracket Material	Steel
Bracket Dimensions	As Per the Project
Bracket Coating	Hot Dip Galvanized
Track on Rail	4 M /Min Motorized - Manually
Hoist Control	Cable
Working Capacity	120 Kg / 250 Kg



Akgül Doğukan, Istanbul - Turkey



Eczacılık Genel Müdürlüğü, Istanbul



DAP, Istanbul - Turkey



Black Sea, Batum



Bahçelievler Hospital, Istanbul - Turkey



Mesa Kartal, Istanbul - Turkey



Kırklareli Public Hospital, Kırklareli - Turkey



Turkmenistan



Capital Tower, Istanbul - Turkey



Tüze Kule, Bursa - Turkey



Adiyaman Adliye Sarayı, Adiyaman - Turkey



DAP Yapı S Office, Istanbul - Turkey



CBI İnşaat Beylikdüzü, İstanbul - Turkey



Sur Yapı Marka, Bursa - Turkey



KN Mühendislik, İstanbul - Turkey



Nef 22 Ataköy, İstanbul - Turkey



Golden Tulip Otel, Cyprus



- It is a façade cleaning system moving horizontally and vertically over aluminum rail (mono rail) connected with the special brackets to the façade.
- As per request and in accordance with the building either one person platform or double/ two person platform is used.
- Platform movement can be achieved either by means of manual or automatic special made movement hoists.
- Aluminium monorail is manufactured and mounted in accordance with the buildings' façade shape and height
- Monorail carrying arms (brackets) can be mounted on the façades front side ,on the parapet , inner side of the parapet ,away from the parapet on the concrete floor or under the eaves.
- Rails can be painted either with natural aluminium colour or upon request.
- All movements can be controlled via the control panel inside the working platform.
- Vertical movement is performed via the climbing hoists' mechanism located on the working platform.

AST-35

SERIES CLIMBING MONORAIL FAÇADE CLEANING SYSTEMS

- Damage on the facade glass is prevented via the means of 2 polyurethane wheels /bumpers founded on the platforms' front side.
- Double security wire ropes ,safety lock system and wire rope tension like safety and security measures provide safe working environment.
- Over load sensor,Lower collision bar,Upper and Lower limit switches prevents operator errors.
- Manufacturing and assembly is in accordance within EN 1808 standards and norms



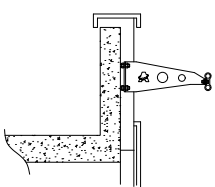
Sinpaş Altınoran Çankara, Ankara - Turkey



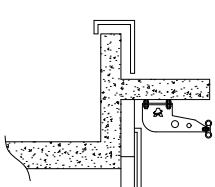
Istanbul Kartal Dr. Lütfi Kırdar Training and research Hospital, Istanbul - Turkey



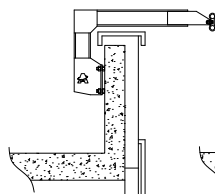
City Of Arabia, Dubai



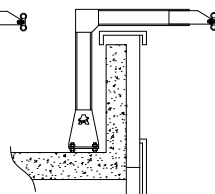
TYPE 1



TYPE 2



TYPE 3

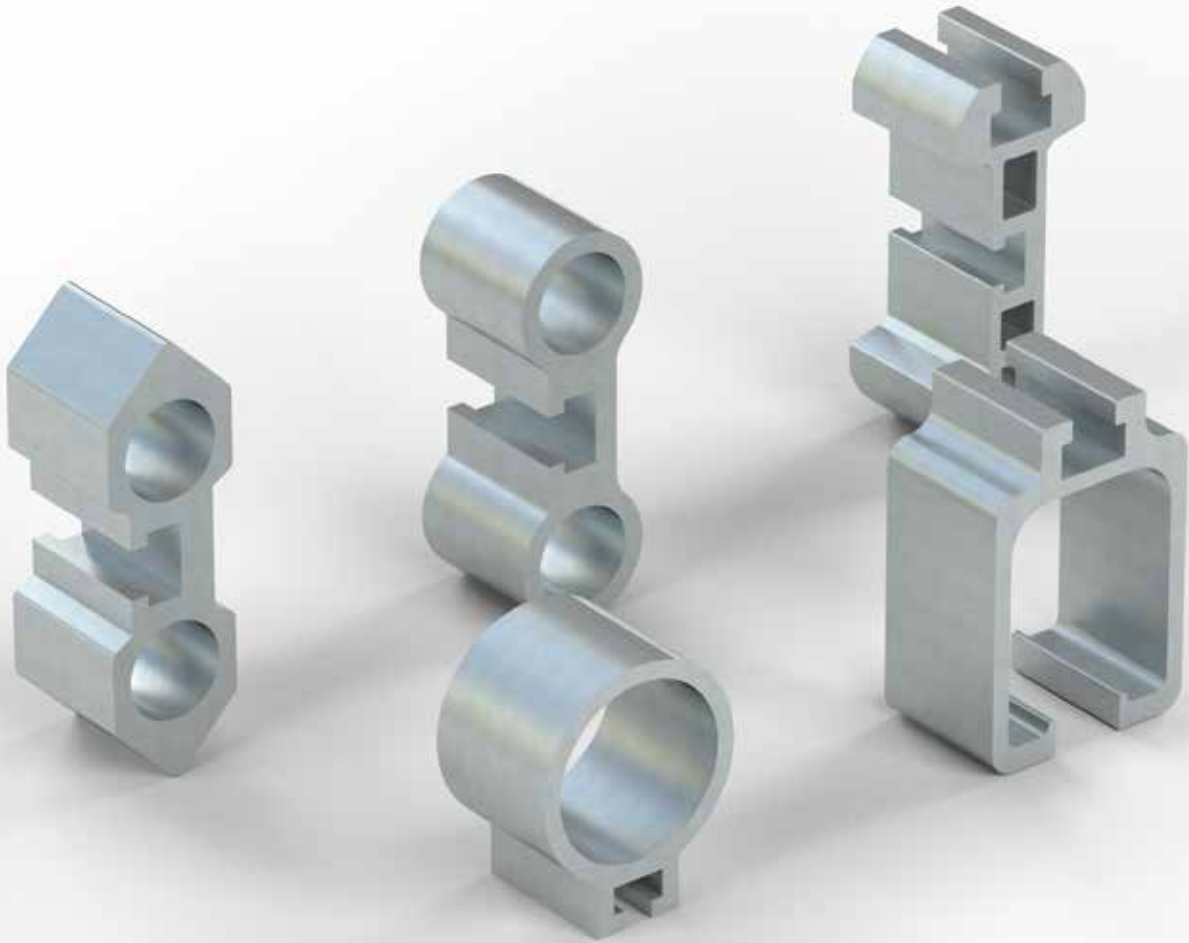


TYPE 4

FEATURES

Used with	AST-05 / AST-10 / AST-10-01
Power	3,2 kW
Wire rope	4 Pieces 8 Mm 6x19
Volтаж	380 V
Control	Cable
Lifting	7 M/Min 2 Unit 1,1 kW
Track On Rail	4 M/Min 2 Unit 1,1 kW
Platfrom Weight	200- 300 Kg
Rail	Aluminium 6000 Series
Working Capacity	120 Kg / 250 Kg

MONARAIL SECTIONS



CLASSIC RAIL



SUSPENDED RAIL



C RAIL



O RAIL



CLIMBING RAIL



AST-40

SERIES FAÇADE CLEANING SYSTEM

- Movable Double jibbed light type façade cleaning system located on the terrace.
- In accordance with the buildings' façade jib length is manufactured between 2,5 m to 5m.
- According to request and in accordance with the project, two person platforms are produced either drummed or hoisted.
- Horizontal movement is performed via one guided rail on concrete or double rail tracks
- For the machine to run at ease on all façade fronts, a backward space from the parapet, a minimum of 2 m space is required.
- By means of hydraulic system the working platforms' distance from the façade is adjusted and the platform can be parked upon the terrace.
- All movements can be controlled via the control panel inside the working platform.
- Upon requirement, cable control or e-cable control systems can be applied.
- AST 40 series façade cleaning systems is preferred upon building heights up to 200m
- Double security wire ropes ,safety lock system and wire rope tension like safety and security measures provide safe working environment.
- Over load sensor,Lower collision bar,Upper and Lower limit switches prevents operator errors.
- Manufacturing and assembly is in accordance within EN 1808 standards and norms



Yolbulan Ataşehir, Istanbul - Turkey



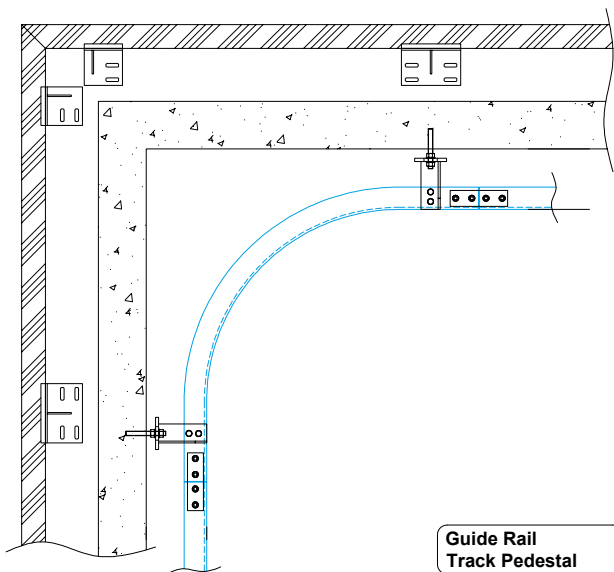
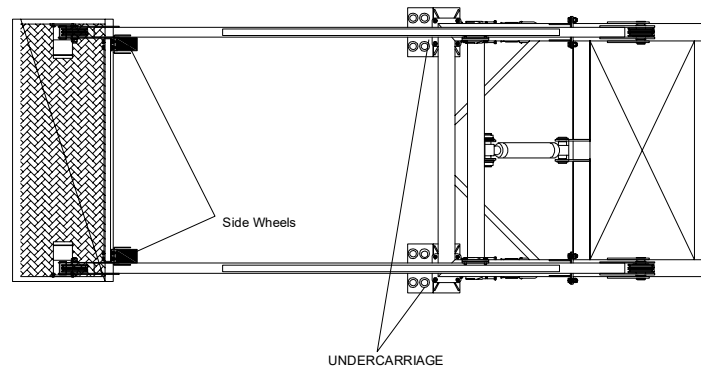
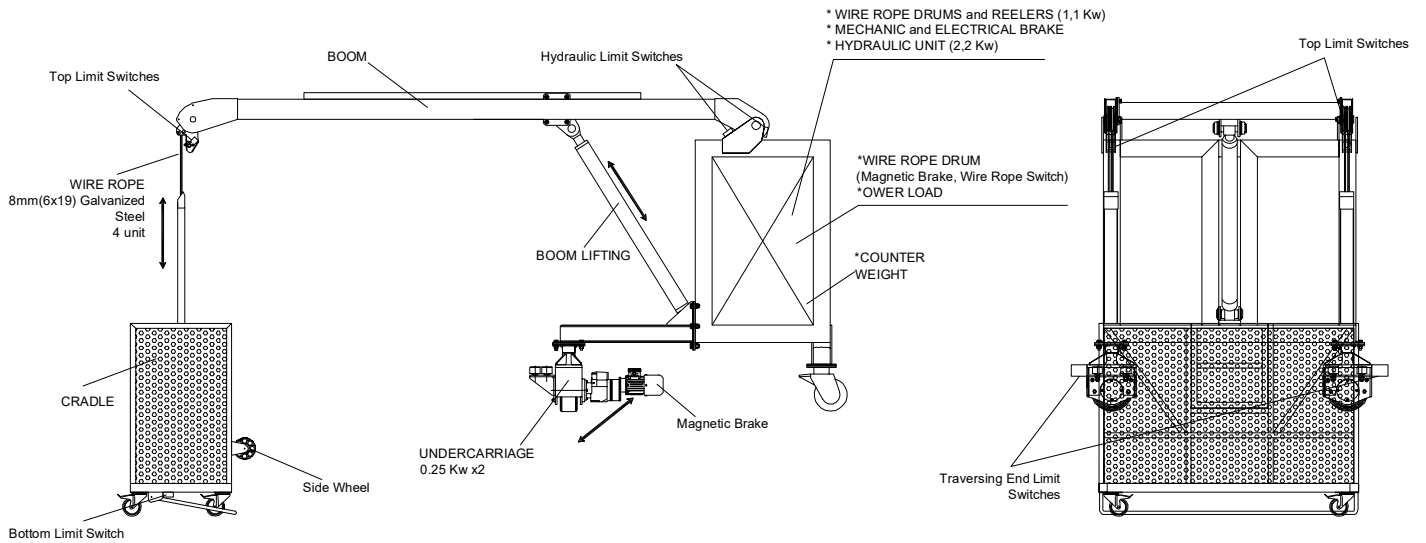
Hampton Otel Kayaşehir, Istanbul - Turkey



Wahat Mall, Sudan



Khartoum, Sudan



FEATURES

Platforms	Two Person and Standard Platforms , AST 10, AST 12.....
Power	3-5 kW
Wire Rope	4 Units 8 Mm
Voltage	380 V
Control	Cable / E-Cable
Lifting Speed	8 M/Min 1 Unit 1,1 kW
Track On Rail Speed	4 M /Min 2 Units 0,25 kW
Hydraulic Lift	4 M/Min 1 Unit 1,5 kW
Safety System	Safety Brakes and Limit Switches
Weight	4.000 +Kg (in accordance to jib lenght and the project)
Coating	Hot dip galvanized. Painted according to request.
Rail Axis	1300 / 1500 / 1700... Mm
Working Capacity	250 Kg
Track On Rail	Guide Rail / Double Rail
Rail Coating	Hot Dip Galvanized



Burak Plaza İstoç, İstanbul -Turkey



Atlantik Eğitim Kurumları, İstanbul - Turkey



Yolbulan Ataşehir, İstanbul - Turkey



AST-45

SERIES FAÇADE CLEANING SYSTEM

- In accordance with the buildings' façade jib length is manufactured between 2,5 m to 5m.
- According to request and in accordance with the project, two person platforms are produced either drummed or hoisted.
- Horizontal movement is performed via double rail on concrete or single guided rail tracks
- For the machine to run at ease on all façade fronts, a backward space from the parapet, a minimum of 2 m space is required.
- +-45° rotatable rotary spreader / separator arm mounted at the end of the jib allows easy access to corners and the edges of the building.
- Slewing of the main body allows access /reach to all points on the façade.
- By means of hydraulic system the working platforms' distance from the façade is adjusted and the platform can be parked upon the terrace.
- All movements can be controlled via the control panel inside the working platform.
- Upon requirement, cable control or e-cable control systems can be applied.
- AST 45 series façade cleaning systems is preferred upon building heights up to 400m.
- Double security wire ropes ,safety lock system and wire rope tension like safety and security measures provide safe working environment
- Over load sensor,Lower collision bar,Upper and Lower limit switches prevents operator errors.
- Manufacturing and assembly is in accordance within EN 1808 standards and norms



Al Siniyar Tower, Qatar



Acıbadem, Istanbul - Turkey



Besa Tower, Ankara - Turkey



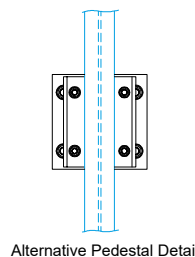
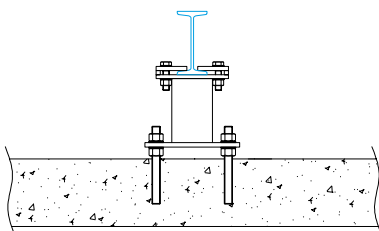
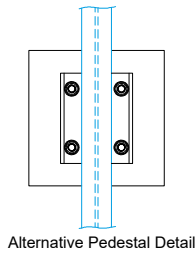
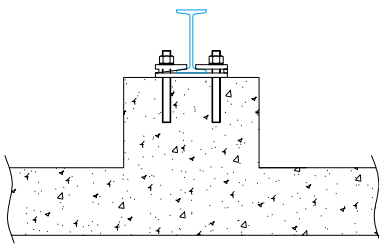
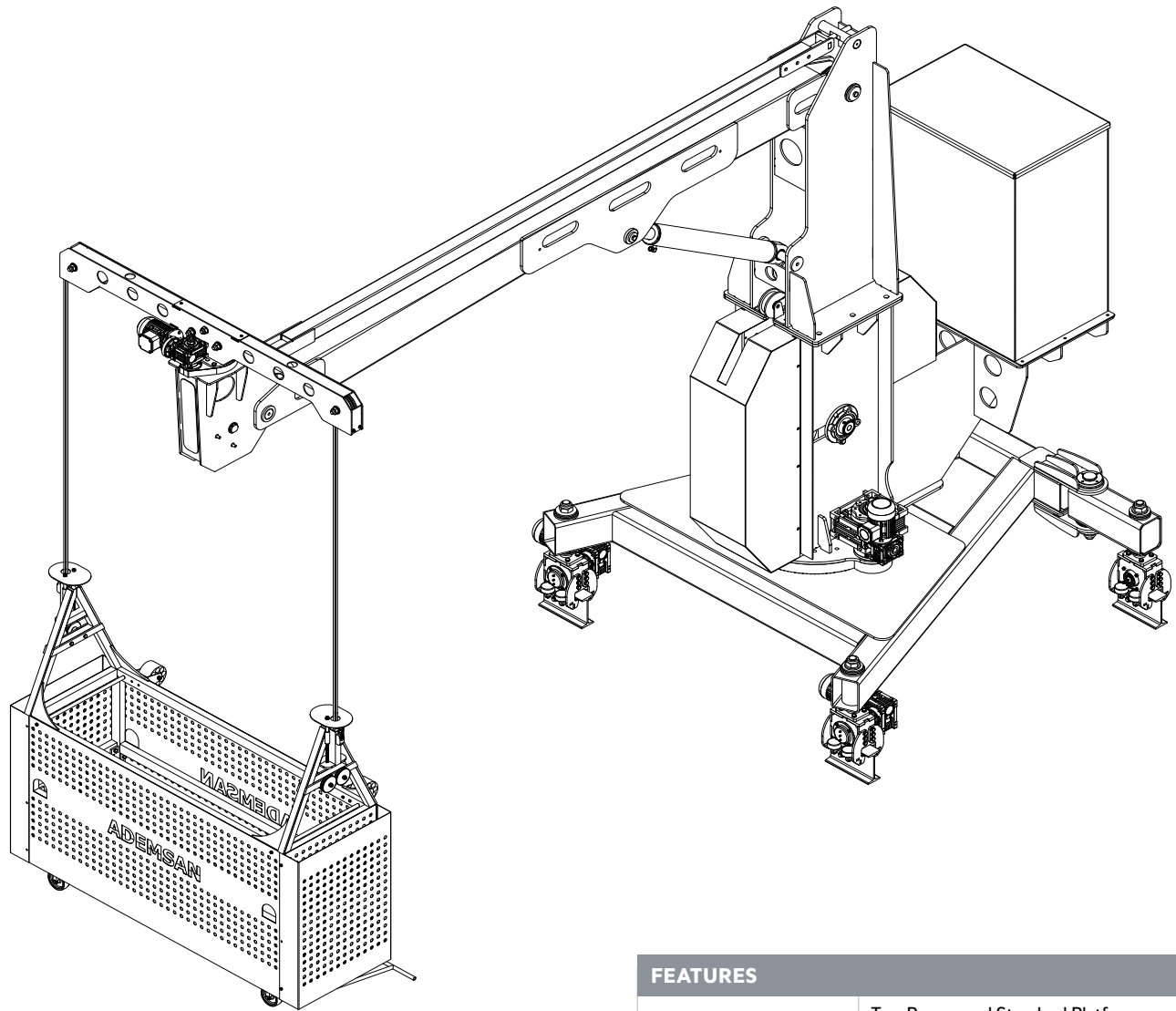
Çevre ve Şehircilik Bakanlığı, Ankara - Turkey



Bölge İdare Mahkemesi, Istanbul - Turkey



Mermerler Plaza, Istanbul - Turkey



FEATURES

Platforms	Two Person and Standard Platforms , AST 10, AST 12.....
Wire Rope	4 Units 8 Mm
Power	3-5 kW
Voltage	380 V
Control	Cable / E-Cable
Lifting Speed	8 M/Min 1 Unit 1,1 kW
Track On Rail Speed	4 M /Min 2 Units 0,25 kW
Hydraulic Lift	4 M/Min 1 Unit 1,5 kW
Main Body Slewing	4 M/Min 1 Unit 0,25 kW
Balance Bar Slewing	4 M/Min 1 Unit 0,12 kW
Safety System	Safety Brakes and Limit Switches
Weight	4.000 +Kg (In accordance to jib lenght and the project)
Coating	Hot Dip Galvanisation. Painted According to the Request
Rail Axis	1300/1500/1700/2000...Mm
Working Capacity	250 Kg
Winch / GRU	100-500 Kg (According To the Request)
Track On Rail	Guide Rail /Double Rail
Rail Coating	Hot Dip Galvanized.



Fakhroo Tower, Bahreyn



Leogrand Hotel, Batam



Mid Contracting, Qatar



AST-50

SERIES FAÇADE CLEANING SYSTEM

- According to request and in accordance with the project, two person platforms are produced either drummed or hoisted.
- The system can be fixed or movable, horizontal movement is performed upon double rail.
- For the machine to run at ease on all façade fronts, a backward space from the parapet, a minimum of 2,5 m space is required.
- Machines' main body can be risen in order to forgo the parapet or other mechanical obstacles on the terrace.
- +-45° rotatable rotary spreader / separator arm mounted at the end of the jib allows easy access to corners and the edges of the building.
- Slewing of the main body allows access /reach to all points on the façade.
- By means of hydraulic piston lift and the working platforms' distance from the façade can be adjusted ,according to the project and as per request, and the platform can be parked upon the terrace.
- All movements can be controlled via the control panel inside the working platform.
- Upon requirement, cable control or e-cable control systems can be applied.
- AST 50 series façade cleaning systems is preferred upon building heights up to 500m.
- Double security wire ropes ,safety lock system and wire rope tension like safety and security measures provide safe working environment
- Over load sensor,Lower collision bar,Upper and Lower limit switches prevents operator errors.
- Manufacturing and assembly is in accordance within EN 1808 standards and norms



Rotana Hotel, Istanbul - Turkey



Enerjisa, Ankara - Turkey



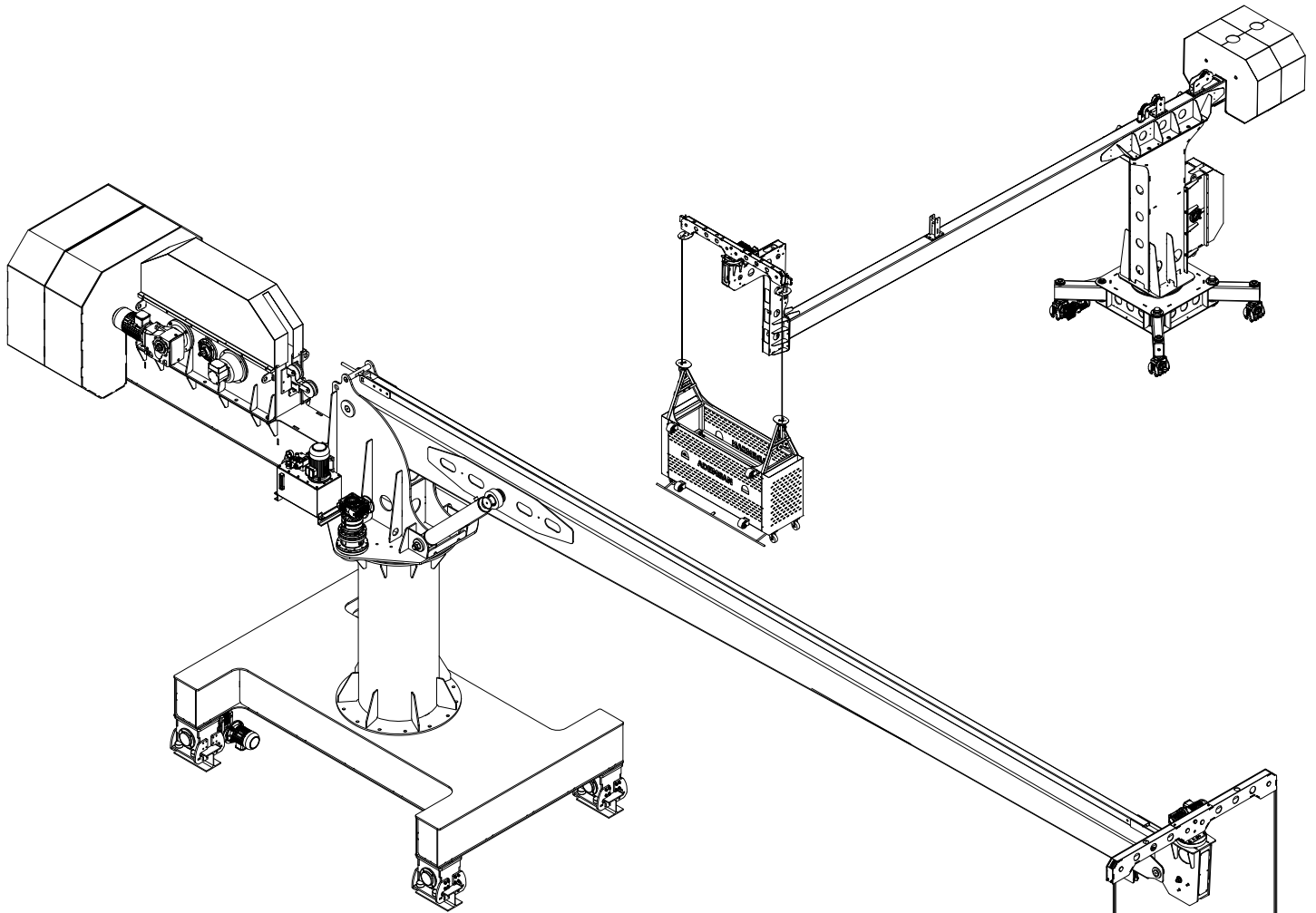
Acibadem, Istanbul



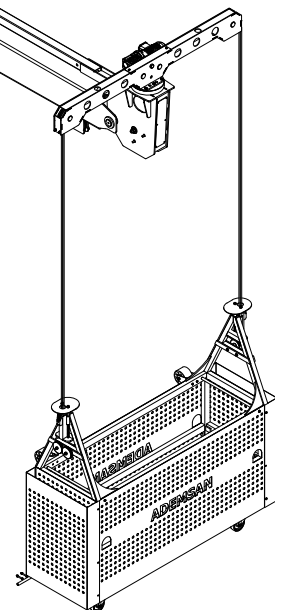
Al Mana Square, Qatar



Crowne Plaza, Istanbul - Turkey



FEATURES	
Platforms	Two Person and Standard Platforms , AST 10 ,AST 12 series
Wire rope	4 Units 8 Mm
Power	4-15 kW
Voltage	380 V
Control	Cable / E-Cable
Lifting Speed	8 M / Min 1 Unit 1,5 kW
Track On Rail Speed	4 M /Min 2 Units 0,50 kW
Hydraulic Lift	4 M/Min 1 Unit 2,2 kW
Main Body Slewing	4 M/Min 1 Unit 0,50 kW
Balance Bar Slewing	4 M/Min 1 Unit 0,12 kW
Safety System	Secondary Safety Brakes and Limit Switches
Weight	5.000 +Kg (in accordance to jib lenght and the project)
Coating	Hot dipped galvanisation. Painted according to request
Rail Axis	1500 / 2000 / 2500 ...Mm
Working Capacity	250 Kg
Winch / GRU	100-500 kg (According to the Request)
Track On Rail	Double Rail
Rail Coating	Hot Dip Galvanized





- 1-) Jeddah, Suidi Arabia
- 2-) Tarım Bakanlığı, Turkey
- 3-) Radison Blu, Turkey
- 4-) Double Tree, Turkey
- 5-) Juffair, Bahreyn
- 6-) Retaj Hotel, Turkey



AST-60

SERIES FAÇADE CLEANING SYSTEM

- It is a façade cleaning system that runs on the buildings terrace via double rails mounted to the inner side of the parapet.
- It is designed to be used on the terrace levels where there is limited space.
- Applicable to the buildings that have reinforced parapets and can meet the machine loads.
- Manufacturing is performed according to the buildings façade, jib length between 2,5 m and 5 m
- On request and upon the project, engined double person or drummed platforms can be used.
- Vertical movement performed via double rail.
- The machine requires a minimum of 1 m space backward to run all façades.
- By the means of hydraulic system, working platform's distance from the façade can be adjusted and thus the platform can be parked on the terrace.
- The +45 ° rotatable separator arm mounted at the end of the jib, provides convenient access to the corners.
- By the means of main bodies engined rotation capability, access to the desired point on the façade is provided.
- All movements can be controlled via control panels founded on the main body and the working platform itself.
- Upon request ; cabled control or wire rope control (128 bit wireless control or e-cabled wire rope) systems can be applied.
- Such safety systems like; double safety suspension lines, block stop safety system, wire rope tension controllers provides safe working environments.
- Via ; overload sensor system, collision sensor bar , lower and upper limit switch operator errors are prevented.
- Manufacturing and assembly is in accordance within EN 1808 standards and norms.



DAP Royal Center, Istanbul - Turkey



Sylyyah Tower, Qatar



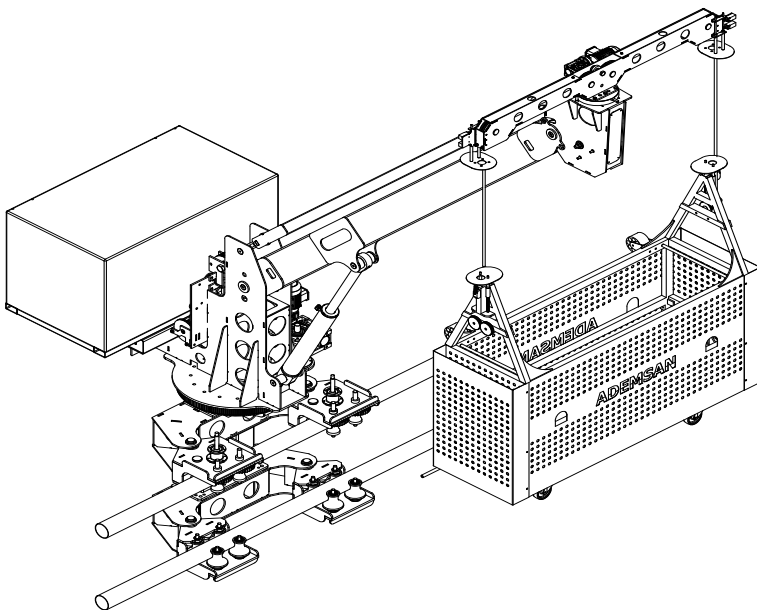
Flora Residence, Istanbul - Turkey



Tamdeen Square, Kuveyt



Adiyaman Hospital, Adiyaman - Turkey



FEATURES

Platforms	Double Person and Standart Platforms , AST 10, AST 12... ect.
Wire Rope	4 Pieces 8 Mm
Power	3-5 kW
Voltage	380 V
Control	Cable / E-Cable
Lifting Speed	8 M /Min 1 Unit 1,1 kW
Track On Rail Speed	4 M/Min 2 Unit 0,25 kW
Hydraulic Lift	4 M/Min 1 Unit 1,5 kW
Main Body Slewing	4 M/Min 1 Unit 0,25 kW
Balance Bar Slewing	4 M/Min 1 Unit 0,12 kW
Safety System	Safety Brakes and Limit Switches
Weight	2.500+....Kg (according to jib lenght and to the project)
Coating	Hot dip galvanisation. Painted according to the request
Rail Axis	600 / 900 / ... Mm
Working Capacity	250 Kg
Crane / Glass Replacement Unit	100-500Kg (According to the Request)
Track On Rail	Double Rail



- Telescopic jibbed heavy type façade cleaning system mounted on the terrace.
- In accordance with the buildings' façade jib length is manufactured between 10 m to 40m
- AST 70 series machines, are high rise and preferred on buildings with a lot of elevation differences
- According to request and in accordance with the project, two person platforms are produced either drummed or hoisted.
- As the system can be both movable and fixed , horizontal movement is performed upon double rail.
- If the machine is to be movable, a movement area of 3 m rail axis is required on the terrace.
- Machines' main body can be risen in order to forgo the parapet or other mechanical obstacles on the terrace.
- Upon requirement and according to the project , with the main bodies' telescopic movement machine can be hidden.
- +-45° rotatable rotary spreader / separator arm mounted at the end of the jib allows easy access to corners of the building.
- Slewing of the main body allows access /reach to all points on the façade.
- By means of hydraulic piston lift and the working platforms' distance from the façade can be adjusted ,according to the project and as per request, and the platform can be parked upon the terrace.
- All movements can be controlled via the control panel inside the working platform.
- Upon requirement, cable control or e-cable control systems can be applied.
- AST-70 series façade cleaning systems is preferred upon building heights up to 500m.
- Double security wire ropes ,safety lock system and wire rope tension like safety and security measures provide safe working environment
- Over load sensor,Lower collision bar,Upper and Lower limit switches prevents operator errors.
- Manufacturing and assembly is in accordance within EN 1808 standards and norms



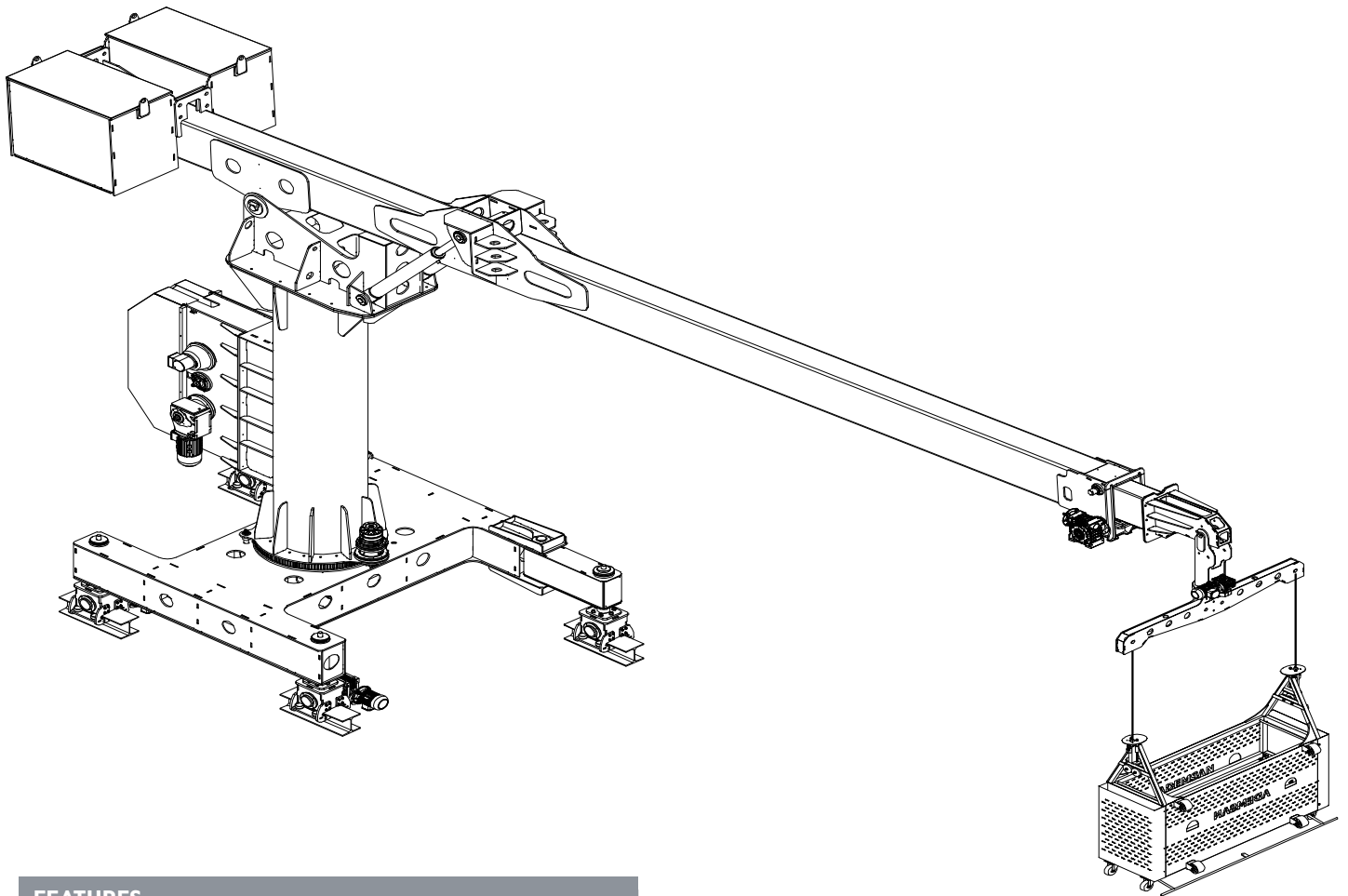
Acibadem, Istanbul - Turkey



Yıldırım Tower, Ankara - Turkey

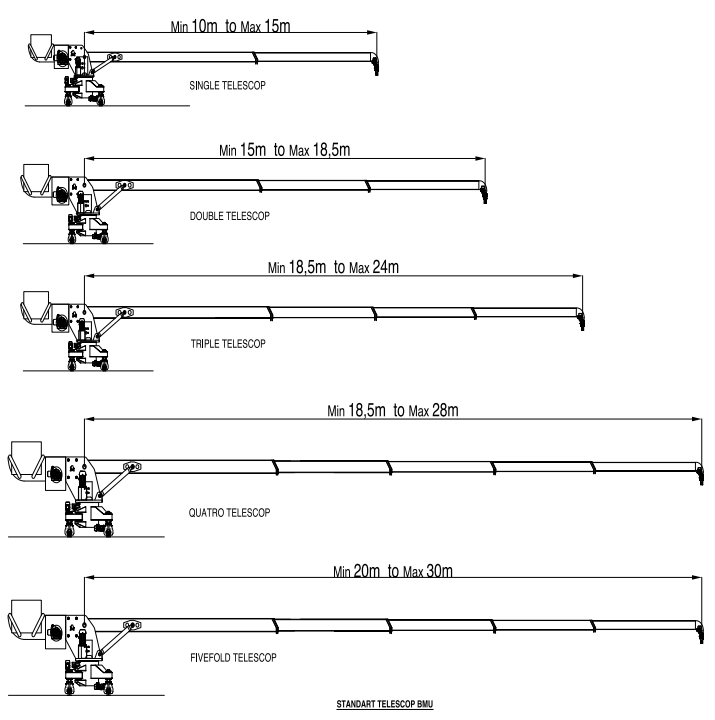
AST-70

SERIES FAÇADE CLEANING SYSTEM



FEATURES

Platforms	Two Person and Standard Platforms, AST 10, AST 12 series
Wire rope	4 Ad. 8 Mm
Power	4-35 kW
Voltage	380 V
Control	Cable / E-Cable
Lifting Speed	8 M / Min 1 Unit 1,5 kW
Track On Rail Speed	Fixed / 4 M /Min 2 Units 0,50 kW
Hydraulic Lift	Fixed / 4 M/Min 1 Unit 2,2 kW
Main Body Slewing	4 M/Min 1 Unit 0,50 kW
Balance Bar Slewing	4 M/Min 1 Unit 0,12 kW
Safety System	Secondary Safety Brakes and Limit Switches
Weight	10.000+Kg (In accordance to jib length and the project)
Coating	Hot Dip Galvanized. Painted According to the Request
Machine Axis	2.000 / 2.500 / 3.000... Mm
Working Capacity	250 Kg
Winch / GRU	100-500 Kg (According to the Request)
Track On Rail	Fixed / Double Rail
Rail Coating	Hot Dip Galvanized.





Kuriş Tower, Istanbul-Turkey



Ramada Hotel, Kirsehir - Turkey



Ege Yapı, Ankara-Turkey

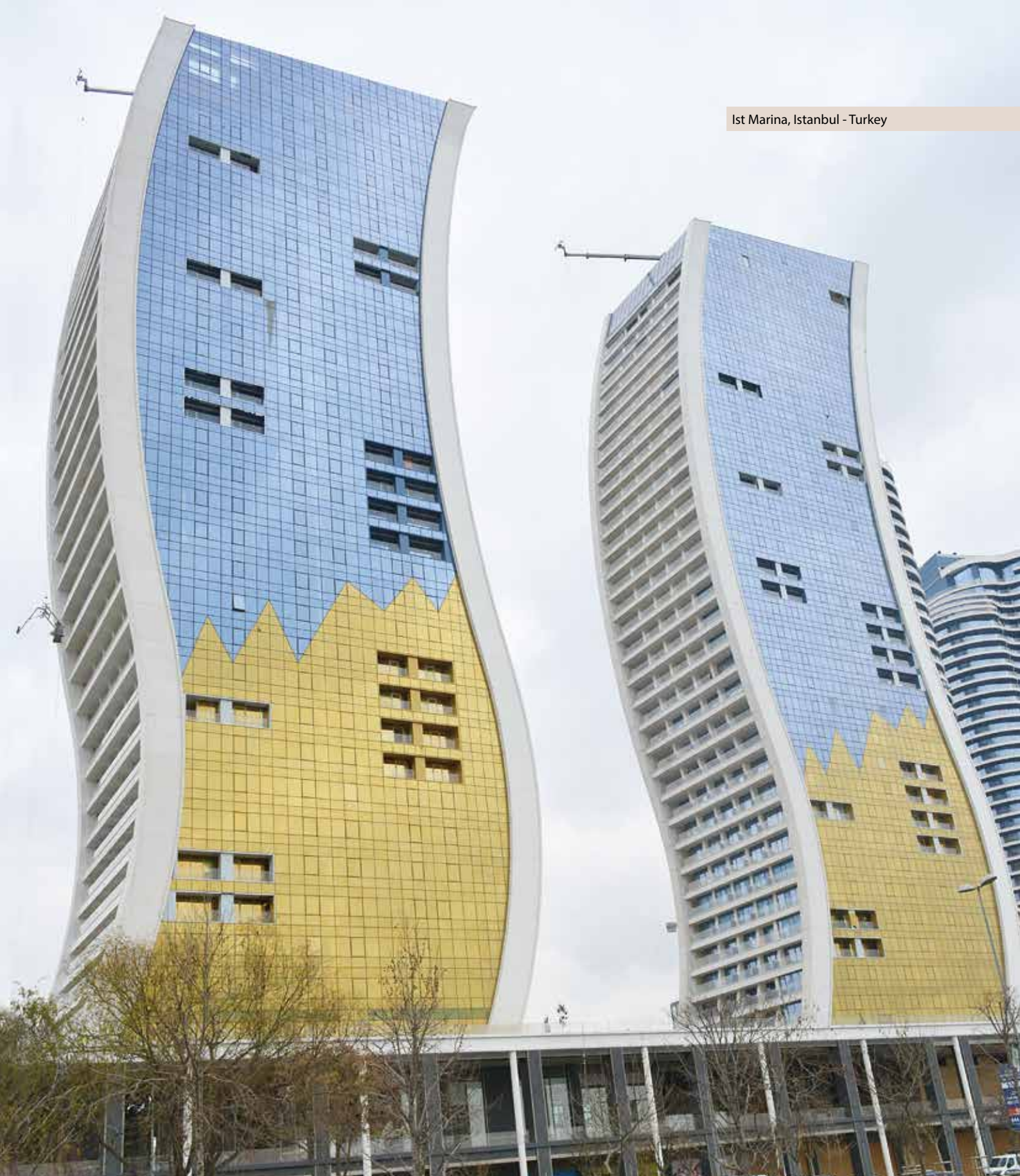
Arjaan Hotel, Istanbul - Turkey



Green Park, Ankara - Turkey



Ist Marina, Istanbul - Turkey





Double Tree Hotel, Doha - Qatar



Nuwat Tower, Doha - Qatar



Marina Res 11, Doha - Qatar



Lusail Com 11, Doha - Qatar



Burj Marina, Doha - Qatar



Credit Libaness, Lebanon



Union Tower, Doha - Qatar



Sky Regnum, Ankara - Turkey



West Gate, Ankara - Turkey



Iconova, Gaziantep - Turkey



Bayraktar, Ankara - Turkey



Balance Istanbul, Istanbul - Turkey



Piazza Mall, Istanbul - Turkey



Nef 03, Istanbul - Turkey



HSC Gayrimenkul, Istanbul - Turkey



Ritim Mazaya, Istanbul - Turkey



Fakir Ev Aletleri, Istanbul - Turkey



Anatolium Marmara, Istanbul - Turkey



Kanoo Tower, Bahrain



Bahcetepe Residence, Istanbul - Turkey



Allsar GYO Istanbul - Turkey



Tango Tower, Istanbul - Turkey



Credit Libanis - Lebanon



Fairmont Quasar, Istanbul - Turkey

SPEACIAL DESIGN

SERIES FAÇADE CLEANING SYSTEM



Doha Oasis Dragon Mall, Qatar



Glass Replacement Unit (GRU)

- Glass Replacement Unit (GRU) is used together with Façade Cleaning Systems (BMU).
- Glass Replacement Unit (GRU) is assembled upon the Façade Cleaning System (BMU).
- Are secured against overload.
- They are used to change the broken glass or panels ...etc on the façade.
- They are manufactured as custom made to uplift 100-750 Kgs.
- Manufactured and assembled as per the EN 1808 Standards.





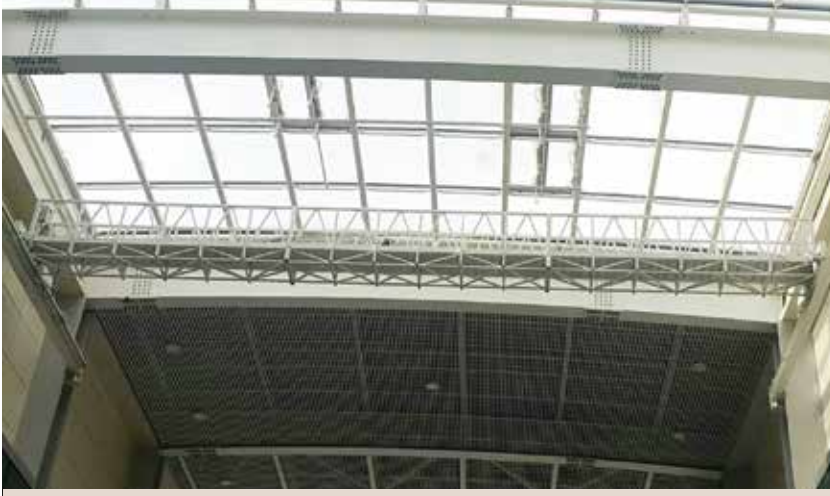
SKYLIGHT

SERIES FAÇADE CLEANING SYSTEM



- Is a system to reach the glass skylight area shown on the project.
- Platforms' carrier rails will be anchored via special made brackets to vaults' steel haunch or to the concrete with 2 m distance apart.
- Carriers are hot dipped galvanized.
- Rails will be delivered and designed according to the project and within the standards.
- Carriers and rails' loads will be calculated by the manufacturer and released to contractor.

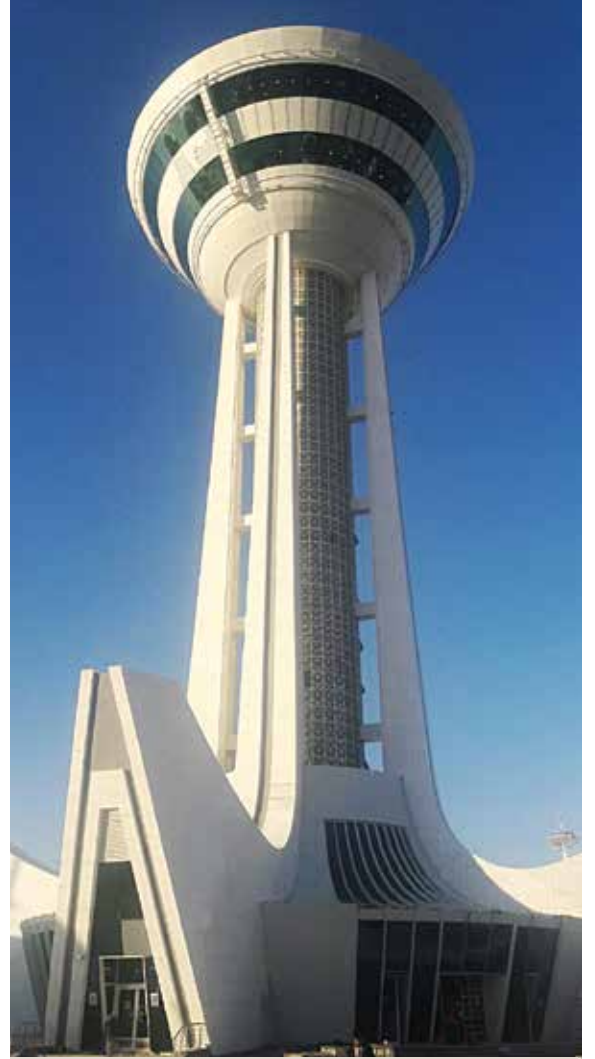
- Platform is to perform its horizontal sliding movement on the 2 pieced rails via the means of electricity.
- Platform capacity will be 250 Kg.
- Platform will be manufactured from aluminum material.
- Vault will be parked at its suitable position.
- Entry and exit to the platform will be performed at its park position.
- Required electricity for the platforms' operation will be supplied by the contractor.
- In order to ensure safety of the operators , in each platform a safety hook and warning signs are placed.
- Opsiyonally safety belts, that are not disassembled and can glide on the guard rails, can be provided o



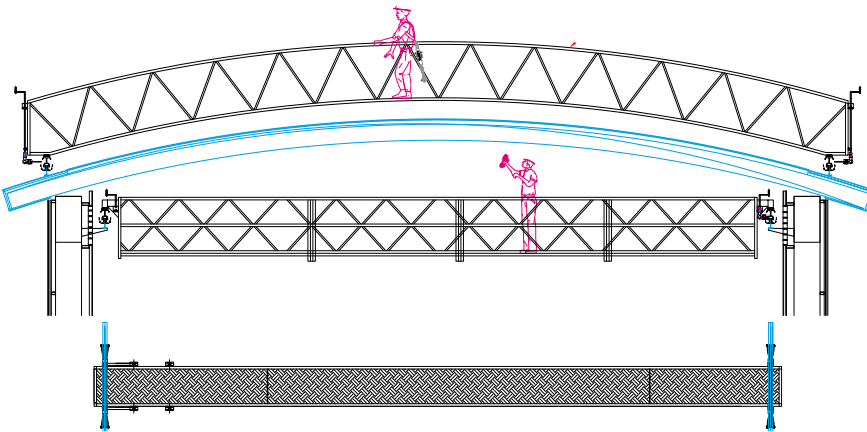
TCDD High Speed Train Station , Ankara - Turkey



Bursa Özdilek AVM, Bursa - Turkey



Turkmenbasi - Turkmenistan



FEATURES

Skylight Model	Manufactured as per the project.
Working Capacity	2 Person / 250 Kg
Platform Dimension	As Per the Project.
Weight	As Per the Project.
Platform Materyal	Aluminium and Steel
Coating	Painted According to the Request
Rail	Double Rail (Steel or Aluminium)
Track on Rail	Manually / Motorized
Standart	EN 1808
Voltage	380 V
Control	Manually / Electrically
Track On Rail Speed	4 M /Min 2 Units 0,25 kW



AS 350 AS 750 AS 1000

ELECTRICAL SUSPENDED SCAFFOLDING SYSTEM

- It can be used for façade cleaning, painting, coating, plastering, maintenance and repair etc.
- Practical installation, portability and modular structure of the suspended scaffolding system provide saving from time and manpower.
- Working platforms are modular and dividable to 1 to 4 meters so they can be used both in narrow and wide sides of the building.
- Vertical movement speed is 7m / min.
- Hoist Traction Mechanism provides endless working range.
- Electromagnetic brakes and block stop mechanisms which will be automatically put in charge in case of wire rope break off and electromagnetic breaks used in self breaking gear boxes will support safety system.
- Double safety suspension lines are available in case of necessity.
- Platform can be moved down manually in case of power cut.
- Our products are under 2 years guarantee against manufacturing and montage faulties.
- Our products are manufactured under European EN1808 rules and norms and have CE certificate.
- On demand we manufacture specific designed suspended scaffoldings for specific buildings.



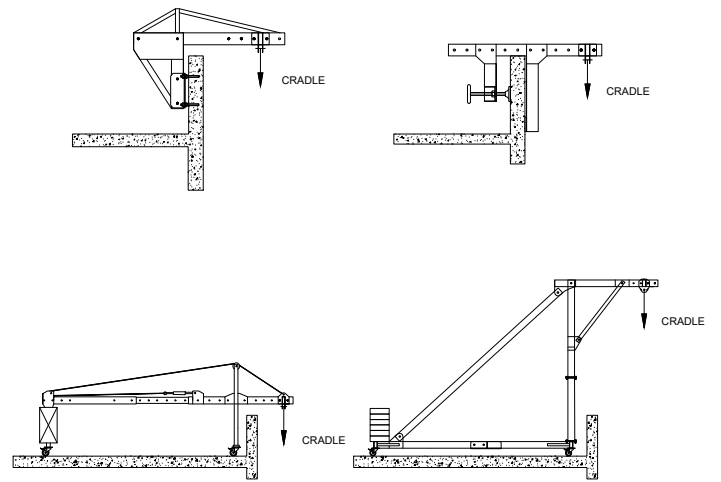
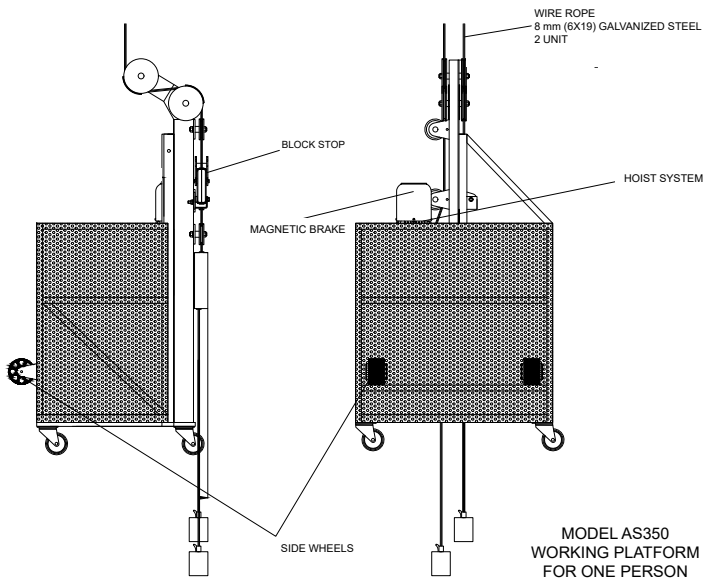
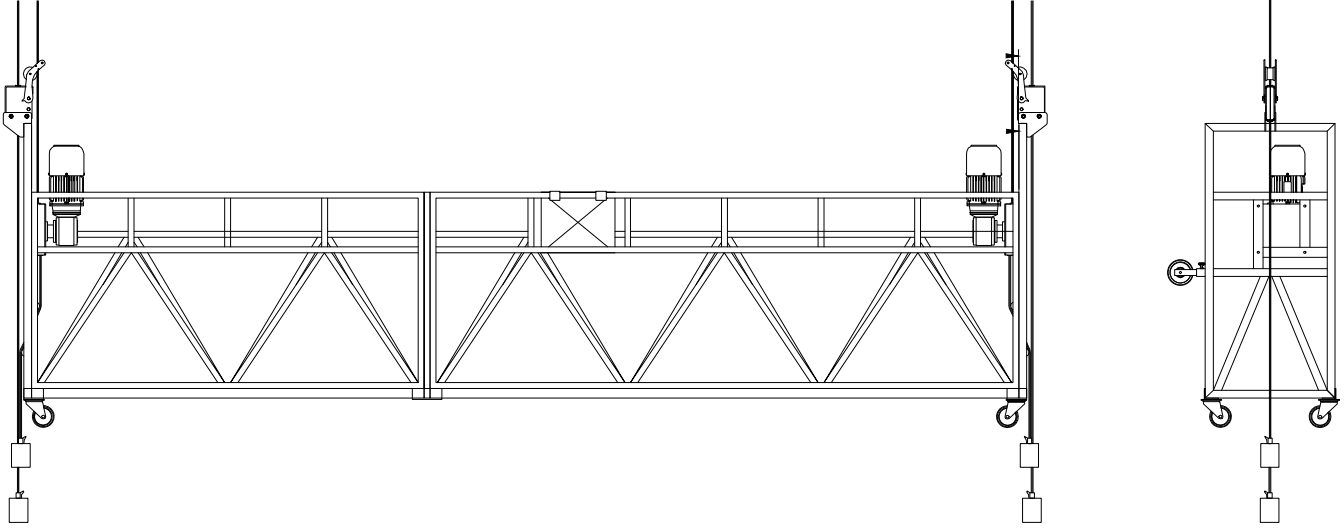
I Tower, Istanbul - Turkey



Hayat Plaza, Ankara - Turkey



Nevada, Istanbul - Turkey



TEKNİK ÖZELLİKLER	AS 350	AS 750	AS 1000
Hoisting Capacity (Kg)	120	500	800
Power	1,1 kW	2,2 kW (2x1,1 kW)	3 kW (2x1,5 kW)
Hoisting Speed	7Mt/Dk	7Mt/Dk	7Mt/Dk
Cradle Dimensions (Cm)	100x66x110	200, 300, 400, 500, 600, 700x66x110	200, 300, 400, 500, 600, 700x66x110
Safety Features	1 Unit Block Stop Electromagnetic Break	2 Unit Block Stop Electromagnetic Break	2 Unit Block Stop Electromagnetic Break
Wire Rope Features	8 Mm (16x19) Galvanized	8 Mm (16x19) Galvanized	10 Mm (16x19) Galvanized
Voltage	380 V	380 V	380 V



Ademsan, Ankara - Turkey



Bursa Stadium, Bursa - Turkey



Konutkent, Ankara - Turkey



Counterweight Suspension Arms:

It is used on the buildings have flat roofs. It is practical and easy to use. Counterweights are placed on the back of the arms. Horizontal movement is performed manually.



Parapet Clamp Arms:

Light, practical, functional, portable arms are preferred if there is a strong parapet wall. 1 set contains 2 fixing clamp arm. Each of the arm has 1000 kg capacity. Provided free with all models of suspended scaffolding platforms.



Electrical Control Panel

CP100

Products	AS350, AS750, AS1000
Brand	Moeller, Schneider
Weight	5 Kg



Block Stop Mechanism

BS 100

Products	AS350, AS750, AS1000
Allowable Load	1500 Kg
Wire Rope	8-10 mm (6 x 19 type)
Rope Lock Distance	150 Mm
Weight	5 Kg



Hoist Traction Mechanism

HT500

HT800

Products	AS350, AS750	AS1000
Hoisting Capacity	500 Kg	750 Kg
Vertical Speed	7M /Min	7m /Min
Motor Power / Voltage	1,1 kW / 380V	1,5 kW / 380V
Wire Rope	8 Mm (6 x 19 type)	10 Mm (6 x 19 type)
Weight	45 Kg	55 Kg



Steel Wire Rope

8mm

10mm

Products	AS350, AS750	AS1000
Breaking Strength	3,546 Kgf	4,600 Kgf
Type	6 x 19	6 x 19
Protection	Galvanized	Galvanized
Weight	0,23 Kg / M	0,37 Kg / M



Baran Lojistik, Istanbul - Turkey



Kontursel, Istanbul - Turkey



Deriner Baraji, Artvin - Turkey



SPECIAL DESIGN

ELECTRICAL SUSPENDED SCAFFOLD

- Used in various such as façade coating, painting, plastering and maintenance.
- Practical installation, portability and modular structure of the suspended scaffolding system saves time and manpower.
- Electrical suspended scaffolds according to buildings' façade are 1-6 m dividable /seperable
- Lifting speed is 7 m per meter
- Due to hoist traction mechanism it provides endless working range.
- Platforms are equipped with hoist brake and block stop systems.
- Double safety suspension lines are available for safety of operator and the platform.
- In case of power cut, manually the system can be lowered.
- Products hold a 2 year guarantee.
- All our products are according to European EN 1808 standards and in vonformance with CE.



Türk Telecom, Ankara - Turkey



Loft Tower, Ankara - Turkey



Izdemir, Izmir - Turkey

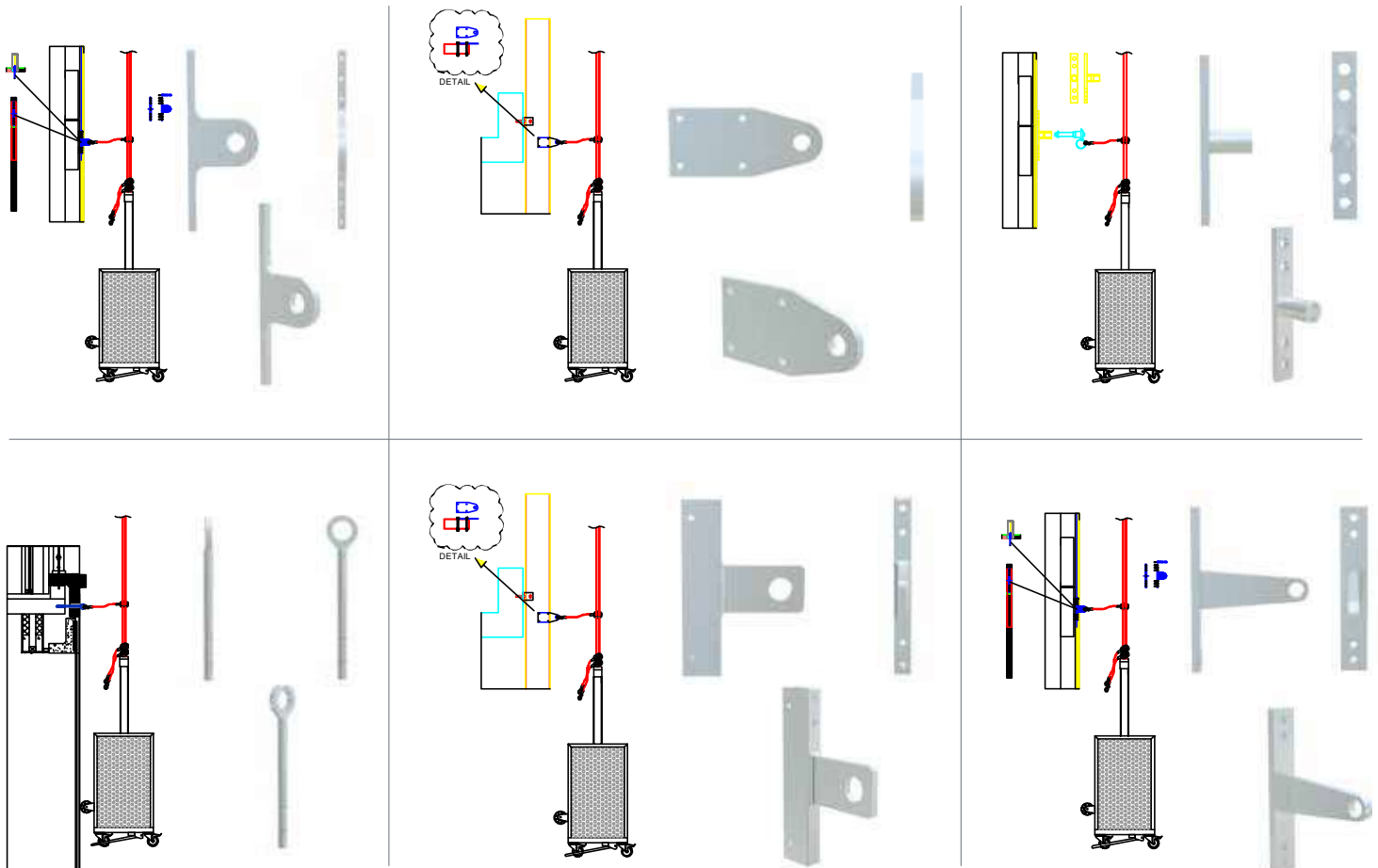


Lavida Balgat, Ankara - Turkey



RESTRAINT SOCKETS

- On buildings where the total descent is 40 M or more in height, restraint systems are used for safety and security of the platform.
- In accordance with the building height, first band of restraint sockets are applied on the first 40 M then each and every 20 M.
- As per request the quantity and the ranges could be incremented.
- Horizontal spacing depends on the width of the platform ; application approximately is performed every 2 Mt.
- Connecting point of the sockets and their ranges are calculated in detail by our project engineers.
- Sockets can be connected upon profiles or upon carrier elements.
- Sockets can be produced by either stainless steel or HDG steel.



Quality & Production

We manufacture the machines in the awareness and importance that they run smoothly long years. All parts and pieces are manufactured at high standards and are individually checked, tested. All the machines produced are tested many times over their capacity and are gotten ready for their mission at the site.



Quality Standards

- EN 1808 European Norms
- CE Certificate
- 98/37 EC Machinery Safety Directive
- 2004/108 / EC Electromagnetic Compatibility Directive
- 2006/95 / EC Low Voltage Directive

Safety Systems

- Electromagnetic brake
- Block stop brake system
- Overload switch
- Emergency stop
- Manually descend / lowering system
- Façade wheels
- Safety rope
- Top collision safety switch
- Lower collision safety switch
- Hydraulic upper switch
- Hydraulic lower switch
- Telescopic system safety switch
- Right-left end switch
- The main body right - left switch
- Rotary / Separator arm right - left switch





Ademsan Machinery



FACTORY

Dağyaka Mahallesi 2002. Street
No:11 Kazan - ANKARA / TURKEY
Tel: +90 312 394 04 74 • Fax: +90 312 395 31 44

ISTANBUL EUROPE

İkitelli Org. San. Böl. Eskop San. Sit.
C5 Blok No: 225 İkitelli - ISTANBUL / TURKEY
Tel: +90 212 549 12 40 • Fax : +90 212 549 12 41

ISTANBUL ASIA

Ferhatpaşa Mah. 73. Sokak No: 54 / A - 5
Ataşehir - ISTANBUL / TURKEY
Tel: +90 216 660 00 09 • Fax : +90 216 660 00 09

www.ademsan.com • info@ademsan.com